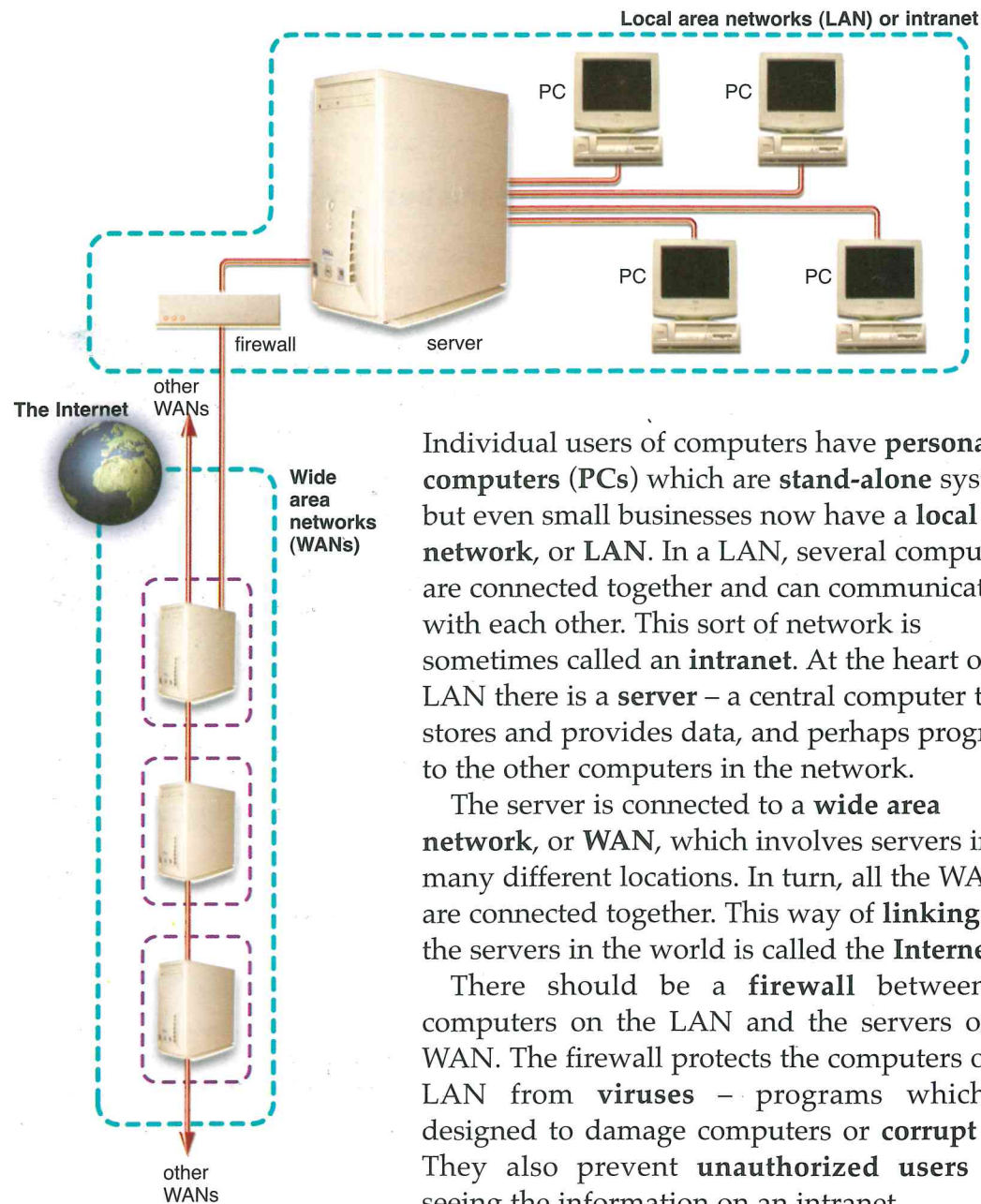




Section 1 Vocabulary

A. Read the text and look at the diagram.



Individual users of computers have **personal computers** (PCs) which are **stand-alone** systems, but even small businesses now have a **local area network**, or LAN. In a LAN, several computers are connected together and can communicate with each other. This sort of network is sometimes called an **intranet**. At the heart of the LAN there is a **server** – a central computer that stores and provides data, and perhaps programs, to the other computers in the network.

The server is connected to a **wide area network**, or WAN, which involves servers in many different locations. In turn, all the WANs are connected together. This way of **linking** all the servers in the world is called the **Internet**.

There should be a **firewall** between the computers on the LAN and the servers on the WAN. The firewall protects the computers on the LAN from **viruses** – programs which are designed to damage computers or **corrupt** data. They also prevent **unauthorized users** from seeing the information on an intranet.

Most servers contain information which they want authorized users around the world to see. This information can be indexed. In this case, it becomes part of the **World Wide Web (www)**. It can be **accessed** through a **browser** – a program like **Internet Explorer** which displays pages from a **website** (an indexed location of particular information). If you know the **internet address**, which usually begins with **www**, you can view the pages. Internet addresses use periods (**dots**) and either run words together or use **hyphens** or **underscores** between words; for example:

www.mycompany.com = 'www dot my company dot com'

or

www.my-company.net = 'www dot my hyphen company dot net'

or

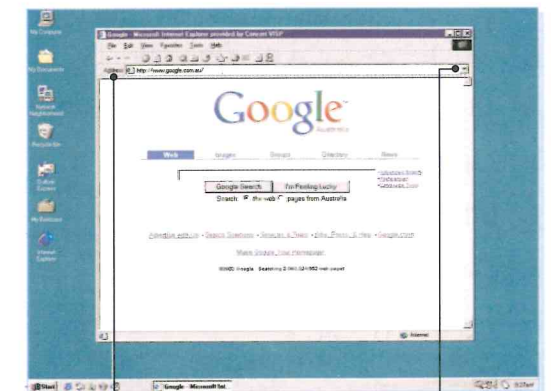
www.my\_company.org = 'www dot my underscore company dot org'

B. Look at the pictures and complete the instructions for accessing a web page.

- Click on the icon for your \_\_\_\_\_. This should be in the quick start \_\_\_\_\_ across the bottom of the screen.
- If you have visited the site before, click on the down \_\_\_\_\_ at the end of the address bar. The address should appear in a drop down \_\_\_\_\_. Move the mouse until the \_\_\_\_\_ is on the address you want. The address will be \_\_\_\_\_.
- If you have never visited the site before, click in the \_\_\_\_\_ bar of the browser.

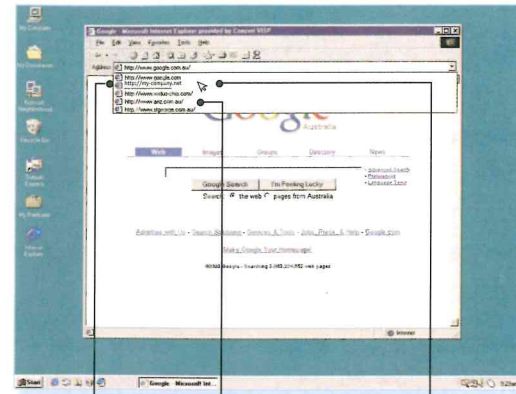


browser quick start menu

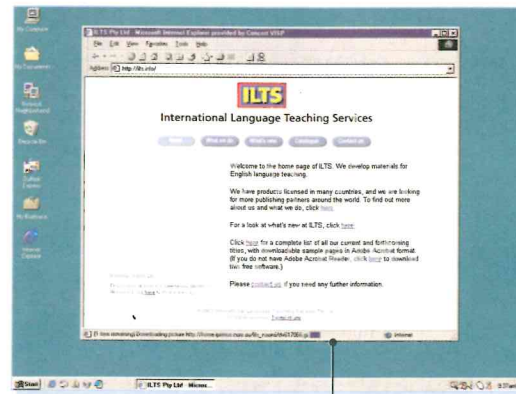


address bar down arrow

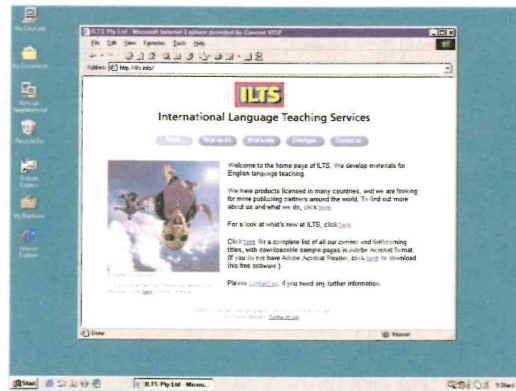
- Type the Internet address carefully in the address bar. You must spell all the words correctly and copy the punctuation – dots, hyphens and \_\_\_\_\_ – exactly. If you want to go to a particular part of a website, you must type the / (slash) sign; for example, `www.my-company.net/my-page.htm`
- Hit ENTER on your keyboard. The web page should be displayed on your screen after a few seconds. If nothing happens, check the \_\_\_\_\_ bar. It's near the bottom right hand corner. If the bar is moving, it means your browser has found the page and is \_\_\_\_\_ it.



This address is highlighted drop down list pointer



progress bar 20% loaded



loaded web page

**C. Match the verbs and nouns/noun phrases to make computer expressions.**

- |              |                     |
|--------------|---------------------|
| 1. move      | a. the data         |
| 2. click on  | b. the home page    |
| 3. highlight | c. the icon         |
| 4. hit       | d. the key          |
| 5. check     | e. the pointer      |
| 6. save      | f. the program      |
| 7. close     | g. the progress bar |
| 8. load      | h. the text         |



**Section 2 Reading**

**Error messages**

Error message	The action
<i>No connection to the Internet is currently available.</i>	Your server may be down; in other words, it may not be able to make a connection to the Internet at the moment. Try later. But there is a more common cause of this error message. You may not have connected to the Internet before trying to access a website. Go to START: PROGRAMS: ACCESSORIES: DIALUP CONNECTION and follow the on-screen instructions.
<i>The page could not be displayed.</i>	Click REFRESH. The page may need to load again. If this doesn't work, the server for this website may be down. Try later.
<i>Error 404 — page not found.</i>	You get this message if there is no page with the address that you typed. For example, if mycompany.com has no page called page1, you will get this error message if you type mycompany.com/page1
<i>This page has expired.</i>	Click REFRESH. You may have clicked on BACK while you were accessing a secure site. You must use the navigation buttons on the page, not the browser buttons. The computer cannot take you back to a secure page and it must reload the page. Sometimes you may have to enter your USERNAME and PASSWORD again.
<i>Connection refused by host.</i>	Either you do not have permission to access the site or a wrong PASSWORD and/or USERNAME may have been entered.

**A. Choose the best answer in each case.**

- |  |  |
|--|--|
| 1. If your server is down:               | 2. Refresh means:                            |
| a. it is connected to the Internet       | a. load the page again                       |
| b. it cannot connect to the Internet     | b. display the page                          |
| c. you haven't connected to the Internet | c. go back to a previous page                |
| d. you must go to DIALUP CONNECTION      | d. it is not clear from the information here |

3. You type *mycompany.com/page1* but the mycompany website has no page 1. Which error message do you get?
- This page has expired.
  - No connection to the Internet is currently available.
  - Error 404 – page not found.
  - The page could not be displayed.
4. How should you move around a secure site?
- with the browser's BACK button
  - with the left / right / up / down keys
  - with the REFRESH command
  - with the site's navigation buttons
5. When you want to go back to a secure page:
- you must click on BACK.
  - you must always enter your password.
  - you must use the navigation buttons on the page.
  - you must enter the address again.

**B. Study the following example sentences.**

**Talking about present possibility**

Your server **may be** down.

You **may have to** enter your user name again.

**Talking about past possibility**

You **may have clicked** on BACK.

You **may not have connected** to the Internet.

**C. Circle the correct forms of the verbs.**

If you get an error message when you try to connect to a website, your server (*may / may be*) down, or you (*may not / may not have*) connected to the Internet. If you are connected properly, then you may have (*made / make*) a mistake in the spelling or punctuation. For example, you may need (*to put / put*) a hyphen or an underscore between words in the address. You may (*have used / use*) the wrong domain name. The site may (*call / be called*) mycompany.org but you typed mycompany.com. If you get an error message that the page has expired, you (*may not have / may have*) clicked on BACK instead of using the navigation buttons on the page.

**Section 3 Listening**



**A. Listen and complete the summary of the reading text in Section 2. Write one word in each space.**

When you are looking for a homepage on the \_\_\_\_\_, be careful with spelling and punctuation. Make sure you \_\_\_\_\_ the name correctly; for example, *company* not *cumpany*. Check the punctuation. Some \_\_\_\_\_ use a hyphen (for example, *my-company*) and some use an underscore (for example, *my\_company*), while many use no \_\_\_\_\_ at all between words (*mycompany*). Finally, check the \_\_\_\_\_ name: *mycompany.org* may not be the same company as *mycompany.com*.



**B. Listen to the conversation. What is the man doing or going to do? Use one or more actions to complete the sentences below.**

find hotels in London	check prices
check availability	look at pictures of hotels
check facilities	book a hotel
book flights	book car rental

1. The man is \_\_\_\_\_  
\_\_\_\_\_
2. The man is going to \_\_\_\_\_